

100
YEARS
1915-2015

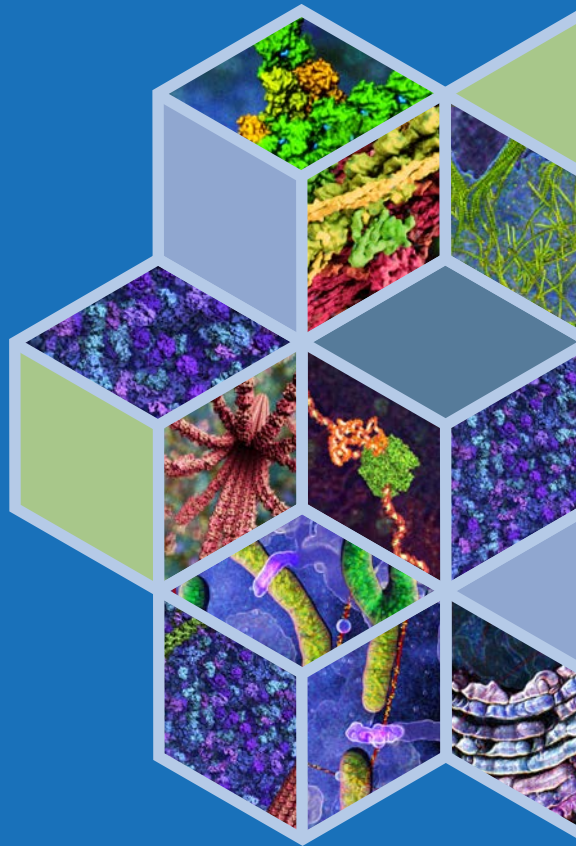


Walter+Eliza Hall
Institute of Medical Research
DISCOVERIES FOR HUMANITY

Centenary scientific symposium

Celebrating discovery

Wednesday 29 – Friday 31 July 2015



#WEHI100



@WEHI_research



WEHIresearch



WEHImovies

Centenary scientific symposium

Celebrating discovery

Wednesday 29 July

9am: Welcome address

James Murphy Chair, Centenary scientific symposium committee

Morning session

Session 1: Immunity 9:05-10.30am

Chair Lynn Corcoran

Walter and Eliza Hall Institute

Historic perspective: **Phil Hodgkin**

Walter and Eliza Hall Institute

Alain Fischer

INSERM, France

Primary immunodeficiencies from genes to pathophysiology and therapy

Ellen Rothenberg

Caltech, US

Dynamics and mechanism of the T-cell lineage commitment process

Morning tea

10:30-11am

Mid-morning session

Session 2: Blood cells and cytokines 11am-1:15pm

Chair Nick Nicola

Walter and Eliza Hall Institute

Historic perspective: **Tony Burgess**

Walter and Eliza Hall Institute

Stimulators of the phagocytes

Peggy Goodell

Baylor College of Medicine, US

DNMT3A in normal and malignant haematopoiesis

Emma Josefsson

Walter and Eliza Hall Institute

Regulation of megakaryocyte and platelet survival

Samir Taoudi

Walter and Eliza Hall Institute

Development of the prenatal platelet-forming system

Glenn Begley

TetraLogic Pharmaceuticals, US

Transforming apoptotic regulators into valuable therapeutics: the development of birinapant



Lunch

1:15-2:15pm

Afternoon session

Session 3: Cancer (cell death) 2:15-5pm

Chairs Jerry Adams and John Silke

Walter and Eliza Hall Institute

David Vaux

Walter and Eliza Hall Institute

Cell death and cancer research at the Walter and Eliza Hall Institute - 30 years in 20 minutes

Kim Newton

Genentech, US

RIPK1 and RIPK3: critical regulators of cell death and inflammation

Afternoon break 3:25-3:45pm

Gabriela Brumatti

Walter and Eliza Hall Institute

Caspase-8 inhibitors combine with the Smac-mimetic birinapant to induce necroptosis and treat acute myeloid leukaemia

Emma Watson

Walter and Eliza Hall Institute

Pro-survival protein MCL1 is essential for endothelial cell survival during angiogenesis

Brent Stockwell

Columbia University, US

Ferroptosis: death by lipid peroxidation

Mixer

5-7pm Social mixer

Tapestry Lounge

Notes:

Centenary scientific symposium

Celebrating discovery

Thursday 30 July

Morning session

Session 4: Cell signalling 9-10:30am

Chair Warren Alexander
Walter and Eliza Hall Institute

Mike Stratton

Wellcome Trust Sanger Institute, UK
Signatures of mutational processes in human cancer

Melissa Call

Walter and Eliza Hall Institute
A conserved core TM structure required for optimal T cell receptor signalling

Jin Zhang

Johns Hopkins Medicine, US
Spatiotemporal regulation of protein kinases and phosphatases in living cells

Morning tea

10:30-11am

Mid-morning session

Session 5: Infection and immunity 11am-1:15pm

Chair Alan Cowman
Walter and Eliza Hall Institute

Historic perspective: **Graham Mitchell**

Foursight Pty

Walter and Eliza Hall Institute vs pathogens: scoreboard and match highlights

Elizabeth Winzeler

University of California, San Diego, US
Chemical genetics and the search for next generation antimalarial drugs

Wai-hong Tham

Walter and Eliza Hall Institute
A conserved structural domain for red blood cell binding proteins of malaria parasites

Kevin Man

Walter and Eliza Hall Institute
The transcription factor IRF4 modulates metabolic activity via anabolic pathways and orchestrates T cell exhaustion during chronic viral infection

John Boothroyd

Stanford University, US
Home-invasion with attitude: how Toxoplasma moves in, rearranges the furniture and turns up the music!



Lunch **1:15-2:15pm**

Afternoon session

Session 6: Cells, genomes and proteomes 2:15-4:30pm

Chairs Terry Speed and Suzanne Cory
Walter and Eliza Hall Institute

Elizabeth Thompson

University of Washington, US
Inheritance of genomes across chromosomes and among individuals

Joan Steitz

Yale University and HHMI, US
Noncoding RNAs: with a viral twist

Jenny Graves

La Trobe University
Weird animals, sex and the future of men

Tom Steitz

Yale University, US
From the structure and function of the ribosome to new antibiotics

Mixer

4:30-6:30pm Hosted mixer: by invitation only

Walter and Eliza Student Association and the Postdoctoral Association
Tapestry Lounge

7-9pm Speakers dinner: by invitation only

University of Melbourne, University House

Notes: _____

Centenary scientific symposium

Celebrating discovery

Friday 31 July

Morning session

Session 7: Infection and immunity II 9-10:30am

Chair Axel Kallies
Walter and Eliza Hall Institute

Nicholas Huntington
Walter and Eliza Hall Institute
Understanding and exploiting innate lymphocytes addiction to cytokines

Daniel Gray
Walter and Eliza Hall Institute
Apoptosis and immunological tolerance

Jonathan Carapetis
Telethon Kids Institute, WA
Shining a light on rheumatic fever pathogenesis

Morning tea

10:30-11am

Mid-morning session

Session 8: Infection, immunity and inflammation 11am-1:15pm

Chair Tracy Putoczki
Walter and Eliza Hall Institute

Eicke Latz
Institute of Innate Immunity, Germany
Regulation of inflammasome activation by post-translational modification

James Vince
Walter and Eliza Hall Institute
Targeting host cell death and inflammatory signalling pathways to treat Legionella infection

Liz Hartland
University of Melbourne
Cell death and inflammation during bacterial gut infection

Chris Goodnow
Garvan Institute
Experimental and computational analysis of germline and somatic mutations in immunodeficiency, autoimmunity and lymphoid malignancy



Lunch

1:15-2:15pm

Afternoon session

Session 9: Cancer 2:15-5pm

Chairs Jane Visvader and Clare Scott

Walter and Eliza Hall Institute

Tyler Jacks

MIT and HHMI, US

Engineering the cancer genome

Hans Clevers

Hubrecht Institute, Netherlands

Wnt signaling, Lgr5 stem cells, organoids and cancer

Afternoon break 3:25-3:45pm

Marie-Liesse Asselin-Labat

Walter and Eliza Hall Institute

Regulation of basal cell differentiation by Ezh2 and IGF-1 in the developing lung

Ana Janic

Walter and Eliza Hall Institute

Identification of the critical p53 tumor suppression mechanisms in vivo

Elizabeth Blackburn

University of California, San Francisco, US

The implications of telomere maintenance for human health and disease

4:55-5pm: Closing remarks

Doug Hilton

Director, Walter and Eliza Hall Institute

Notes:

